

International Student Guide

WELCOME !

**STUDY AT ISARA
PROGRAMMES
BEFORE COMING
UPON ARRIVAL**

WELCOMING INTERNATIONAL STUDENTS



Nathalie-Zoé FABERT

Office A103

student@isara.fr

+33 4 27 85 85 10

Domoina RAKOTOSOLOFO

CROUS VISA

mobilite.ipl@ipl.fr

Academic advisors

Valentine LAMORT - 4th year: vlamort@isara.fr

Valérie CHOFFEZ - 5th year: vchoffez@isara.fr

BEFORE COMING TO LYON, CHECK OUR VIDEO !



PREPARE YOUR STAY

1 - STUDY AT ISARA

Welcome to Lyon - p.3
How to get to Lyon and ISARA ? - p.4
Your host University - p.5
Facilities at ISARA - p.6
Students associations - p.7



2 - INTERNATIONAL PROGRAMMES

International student syllabus - p.8

3 - BEFORE COMING

Useful documents to bring for formalities - p.10
Immigration : VISA (Non-EU students) - p.11
CVEC procedure - p.12

4 - UPON ARRIVAL

Student welcome desk - p.13
Accommodation - p.14
Housing allowance - p.16
Bank account - p.17
Health and insurance - p.18
Daily life - p.19
Public transportation - p.20
Budget - p.21



WELCOME TO LYON

A DYNAMIC ENVIRONMENT

ISARA is located in Lyon, south-east of France, in a very dynamic environment surrounded by a large number of companies, research centres and professionals working in the field of agriculture, food industry, rural development and environment sectors at large.



A VIBRANT STUDENT CITY

Second ranking city in France in regard to its number of students, Lyon has a rich cultural and gastronomic tradition and an 'old town' which was designated World Heritage Site by UNESCO. Our lively city will offer you an exceptional quality of life.

Studying in Lyon is an opportunity for each of its 130 000 students to enjoy fascinating sites and events, including evening parties organized on barges, the renowned Festival of lights (Fête des Lumières), The Dance Biennale (Biennale de la Danse), the Nuits de Fourvière (outdoor music, dance and theatre festival held in an ancient Roman Amphitheatre). Or, if you prefer, you can enroll for free in organized rollerblading tours, offered every Friday, to discover Lyon by night...

AN IDEAL LOCATION

Apart from its worldwide renown in terms of culture, gastronomy and sports, the city of Lyon is also well known for being a big city, yet convivial and easy to visit on foot. Beyond that, not only does Lyon share borders with Italy and Switzerland, it is easy to escape to the mountains and the sea which will give you the opportunity to take part in a variety of leisure activities.

WITH A NICE CLIMATE

The natural diversity of this area (Mediterranean and temperate climate, plains and mountains) provides easy access to a wide range of activities related to agriculture and food: various crop products (cereal plants, vines, vegetables...), cattle breeding, and many other activities which are strongly linked to a huge network of food processing industries.

HOW TO GET TO LYON AND ISARA ?



BY PLANE

Lyon-Saint Exupéry international airport (99 international and 20 national links - 25 km east of Lyon) is less than an hour drive from Lyon. It can be more easily and quickly reached via the Rhônexpress shuttle:

- Departure: every 15 minutes - Duration: 30 minutes www.rhonexpress.fr
- Cost: €10.50 per person under 25 - €17.10 per person over 25



BY PLANE

SNCF is the main French train company. www.sncfconnect.com

From Paris «Roissy-Charles de Gaulle» airport or Paris «Gare de Lyon» train station to Lyon «Part-Dieu» or Lyon «Perrache» station : 25 TGV high speed trains daily (2-hour journey). From Marseille: 1 hour and 40 minutes

You may also want to use the Ouigo high speed train service, which usually operates from/to remote train stations but at a more affordable price (starting price from Paris «Marne La Vallée» to Lyon «Saint Exupéry»: €10) www.ouigo.com

Or the Trenitalia line between Paris and Lyon www.trenitalia.com



BY BUS

Broad range of destinations at very affordable prices (starting price from Paris to Lyon: €5):

- Flixbus www.flixbus.fr
- BlaBlaBus www.blablacar.fr

FROM LYON “PART-DIEU” TRAIN STATION TO ISARA

- At Part-Dieu station, take the exit «Vivier Merle» to find the subway
- Take the subway line B (blue) toward «Gare Saint Genis Laval»
- Get off the subway at «Stade de Gerland»
- Take the exit «Parc Relais TCL» (up two flights of stairs)
- Walk straight for 50 meters; then turn on your right and cross a large parking lot. On the other side of the parking lot, you will find the street «Jean Baldassini». Continue walking straight ISARA is located 100 meters down this street, on your left.

YOUR HOST UNIVERSITY

ISARA was created in 1968 with the aim of training students to become managers specialised in agriculture. ISARA delivers engineering degrees (master level diploma accredited by the French State) and international masters. Since its creation, rural development has been an important part of ISARA's higher education and research activities.

KEY FIGURES ON ISARA

Non-profit organization
330 professional lecturers
Over 1300 students and apprentices
153 lecturers, scientists and
administrative employees

ISARA has developed its higher education and R&D partnership in the Provence-Alpes-Côte-d'Azur area through the integration of ISEMA (Institut Supérieur Européen de Management Agroalimentaire) and as a member of the "Fruits & Vegetables" Cluster.

ISARA is situated at Agrapole, a centre of excellence created by Rhône-Alpes local authorities, specialised in agriculture and food, which includes over fifty professional organisations working in these sectors.

New curricula were created, among which vocational engineering training (MSc level), engineering training in apprenticeship (MSc level), 2 MSc in Agroecology and, 1 MSc in Sustainable Food Systems.

Over the last 20 years, applied research, study, consulting and expertise activities, innovation, entrepreneurship have also been developed by ISARA.

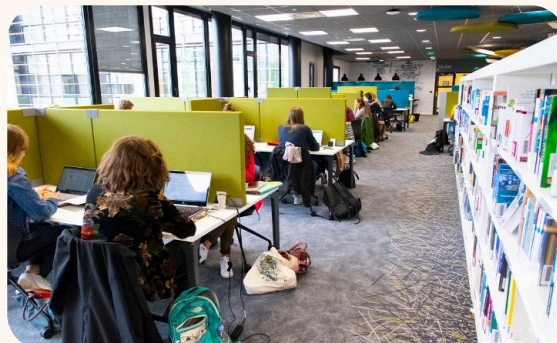
These activities play a very important role in our higher education programmes as they continually help improve our teaching staff's skills, create linkages with professional and scientific stakeholders, and develop ISARA's reputation, among others.



FACILITIES AT ISARA

La Source: library and documentation resources

In the library, comfortable seating is at disposal to surf on the Internet, with tablets available to all students. You can also keep up with the latest news by reading a range of daily newspapers.



The student common room

“Le Foyer” provides fridges, a few microwaves, running water, sandwiches, coffee and tea, and places to seat and eat. This is where the students used to meet and spend time together outside class.

Internet and computer resources

ISARA also offers free Wi-Fi connection to all students in the whole building, as well as 80 computers available in several IT rooms. Our students have access to their schedule, information on classes, emails and contacts with teachers directly through our [Intranet](#).



Snack bar and cafeterias

There is one snack bar inside ISARA, located in the ground floor. You can buy sandwiches, salads, warm plates, fruits and drinks. It opens from 11:15 to 13:30.

Two “restaurant universitaire” are located inside the Ecole Normale Supérieure de Lyon, near ISARA:

- Resto’U ENS, site René Descartes: 15, parvis René Descartes 69007 Lyon
- Resto’U ENS, site Monod: 46, allée d’Italie 69007 Lyon

One meal at the cafeteria is €3,30 and can be paid with your student card. The card must be activated at the desk of the cafeteria. You will then have to charge it with your credit/debit card.

STUDENTS ASSOCIATIONS

ISAR'RIVENT: the student club dedicated to International Students

Composed of a group of ISARA student, its goal is to welcome and ensure the integration of international students. They accompany and help students, from their arrival (at the airport or train station), to their departure. They organise a lot of events like hiking, outings in restaurants and the celebration of Traditional French events. A buddy program is offered for all international students. Do not hesitate to contact them at isarrivent@etu.isara.fr.



BDE:

The Student Union, with its team of more than 30 members, will give you useful information regarding student activities: sport, music, events... The BDE is available every day from 13:00 to 14:00 and usually during the morning break.

ISARAMAP:

An association supporting small farming that creates a direct link between producers and consumers. You will be able to register for a semester or a year in order to get vegetables, bread, fruits, eggs, cheese weekly.

APE:

The Junior Enterprise of ISARA.

FF Sport: (French Federation of Sport at University)

It offers a wide range of sports to all students. To register, you will need a Medical Sport Certificate to be filled up by your doctor.

INTERNATIONAL STUDENT SYLLABUS

ISARA offers international students the opportunity to choose courses within different programmes. All classes offered at ISARA are listed on our [website](#).

Come and study at ISARA as an exchange student:

- Fall semester (September to December/January): speciality courses (full semester courses)
 - In English: Agroecology; Sustainable Development in Food Industries
 - In French: Animal science; Agroecology; Food technology; Territory management; Viti-viniculture
- Spring semester (January to June): elective modules in agriculture, food and environmental sciences

Required level of the language of instruction: B2 (C1 for the Agroecology course).

Admission steps:

- Nomination: by e-mail from your home university's IR office to student@isara.fr
- Deadlines:
 - for Fall semester and full academic year: April 21st
 - for Spring semester: October 12th
- Application: through the online form – deadlines: April 28th / October 19th
- Answer: Mid-May (Fall semester) – Mid-November (Spring semester)

Academic calendar:

Study year	Start of the school year	Classes end
4th year (1 st year MSc level)	Early September	End of June
5th year (2 nd year MSc level)	Early September	Mid-December (English taught classes) End of January (French taught classes)

INTERNATIONAL STUDENT SYLLABUS

Come and study at ISARA in our MSc Agroecology or Sustainable Food Systems:

Several international MSc programmes are offered to international students in collaboration with partner universities worldwide:

- European MSc Agroecology, with the Norwegian University of Life Science
www.agroecos.fr
- MSc Agroecology Organic Agriculture, with Wageningen University
www.agroecology.fr
- Sustainable Food Systems, with the Università Cattolica del Sacro Cuore
www.susfoods.eu

Public holidays (no courses):

- 1st November; 11th November; 6th April; 1st May; 8th May; 14th May

Holidays 2025-2026:

Christmas break	Winter break	Easter break
Dec 22 nd to Jan 2 nd	One week in February	One week in April

USEFUL DOCUMENTS TO BRING

Once selected and before your arrival, please contact us to let us know when you will be arriving (date - time - place). It is also important to contact your coordinator in your home university for administrative formalities such as visa, insurance coverage and so on...

Check-list:

Please, make sure to bring all the following documents with you to France:

- Your **passport or national identity card** (the latter for European Union citizens only)
- Your **birth certificate**. For some French administration procedures, you will need to have a certified translation or an apostille. If necessary, you can translate your document in Lyon upon arrival.
- **Proof of your insurance policy**, including your civil liability and repatriation insurance
- Your **European health insurance card** for EU students
- **1 set of headshot pictures** of you

You will be asked to provide these documents to complete various administrative files (CAF, CROUS, bank, insurance...).



IMMIGRATION: VISA

For Non-European Students

We strongly recommend you to apply for a **VLS-TS** (Students), which allows you to renew your visa if needed, work 20 hours/week max and ask for social housing allowance (CAF). **You will need to validate your VISA online upon arrival.**

Apply for the visa at the French consulate or embassy of your current country of residence. Be very clear and describe your academic project and your situation in France to make sure you will be given the appropriate VISA.

For the MSc Sustainable Food Systems and Agroecology:

You will apply for a French VISA in the country where you are studying during the second semester of your MSc. You must schedule an in person appointment at the closest French consulate via its official website. **We encourage you to book your appointment at least 6 to 8 weeks before departure.** Your visa appointment at a French consulate must take place no more than 90 days before and at least 2 weeks before your departure to France. Please note that it may take up to 4 weeks before the next appointment is available, especially in summer.

You are required to attend the visa interview at the consulate in person.

The main documents to supply are:

- Your passport (passport must be valid for the duration of the visa requested)
- ISARA certificate of enrolment
- Proof of income
- Depending on the country, other documents can be required

Campus France online application process:

If you live in one of the [72 countries](#) concerned, you **MUST** complete the Campus France online application process **BEFORE** you start your visa application.

After you have created your Campus France account through the online [PASTEL](#) system and have filled out the personal information section, you will be automatically assigned to the closest French consulate to your permanent address. Then, you must schedule an in person appointment at your assigned consulate via the official [France Visa website](#).

Please note that the Campus France application will NOT be carried out by ISARA. You must therefore enrol in BOTH Campus France and ISARA (2 separate files). You will have to pay administrative fee for Campus France registration & visa fee.

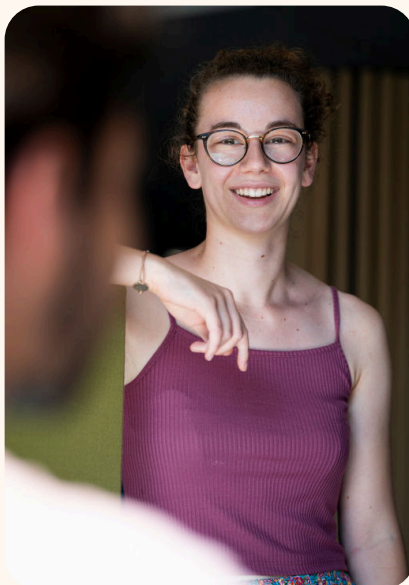
CVEC PROCEDURE

For MSc and degree-seeking students only

In France, all graduate students must pay a Student Life Contribution to the CROUS of €103/academic year.

CROUS issues a reference number upon payment of the contribution by the student. The attestation is to be submitted by the student to ISARA before your arrival. More information [CVEC Procedure](#).

This procedure does not apply to exchange students.



STUDENT WELCOME DESK

The Université de Lyon and its partners are working together to greet you and help you get settled.

At the beginning of each academic year, the [Students Welcome Desk](#) offers a reception desk where you will find all the services and information you might need, and receive support for all your administrative procedures, including your residence permit, long stay visa, housing and jobs, transit, health and access to healthcare, culture, tourism...

The Students Welcome Desk also organises “Meet & Greet” on various themes, both during the daytime and in the early evening, so you can meet and talk to people involved in student life, and settle into the city.

You must participate in this Student Welcome Desk so you can get off to a good start: all your administrative procedures at a glance!

The Student Welcome Desk is open from September until December.

More information on the [website](#):

Université de Lyon

Helpline: +33 (0)4 37 37 43 00



ACCOMMODATION

There is no student hall on our campus. The CROUS is the institution providing student accommodation in France. **ISARA has an agreement with the CROUS enabling us to provide rooms for our International students** (upon availability).

You cannot book these residences yourself. You must send us your Accommodation Form filled and signed in order to book a room. Accommodation will be given on a first come, first served basis and according to ISARA's availabilities.

Since the demand is very high and only a few rooms are available, there are 2 requirements:

- You have to send your accommodation application to us as early as possible
- You must agree to rent a room for a full period (For example, from September to the end of December and/or from the start of January to the end of June)

Description of the different rooms:

- **Room: (around 10 m²)**

Includes a private bathroom and toilet. The kitchen is shared, but there is an individual fridge in each room, no kitchenware (at your charge). Blanket, bolster and bed linen are not provided but can be rented for €10/month.

Price €283/month with water, electricity, internet and heating included.

- **Studio (12 to 20 m²)**

Includes a bathroom and toilet as well as a private kitchen, no kitchenware (at your charge). Blanket, bolster and bed linen are not provided but can be rented for €10/month. **Price €420/month.**

- **Shared flat (generally for 5 people)**

Includes a bathroom, toilet and a kitchen shared by all roommates. No kitchenware (at your charge). Blanket, bolster and bed linen are not provided but can be rented for €10/month. **Price €340/month.**

Find some examples of CROUS students hall

[Résidence Benjamin Delessert](#)

[Résidence La Madeleine](#)

[Résidence des Girondins](#)

Try not to arrive during week-end, the reception desk might be closed.

ACCOMMODATION

Students can choose **alternative accommodations**, without the help of ISARA:

- Be hosted by a French family in Lyon www.expats-agency-lyon.com
- Be part of an intergenerational experience [Tim & Colette](#)
[Pari Solidaire](#)
- Rent a small flat in a private student Hall (18 to 40 m²) www.studilodge.fr
- Find other alternative accommodations on our [website](#)

Housing insurance:

You will be required to subscribe to a housing insurance policy upon arrival, whichever housing choice you make. It is mandatory in France.

We suggest, for instance, the services of the [ADH](#) which offers both civil liability and housing insurance at a very affordable price (basic “Formule 2”), or [Heyme](#).

Cost is about €35/year.



HOUSING ALLOWANCE

CAF (Caisse des Allocations Familiales) is a family benefits organisation. As a student renting a flat in France, you are eligible for housing allowance called “Aide Personnalisée au Logement” (APL) provided by this organisation.

The amount depends on the location of the flat, its surface area and the revenues of the student. You can apply [online](#), or go directly to the CAF (67 Boulevard Marius Vivier Merle, 69003 Lyon), or seek for help during the Welcome desk Days.

Create your [CAF account](#) and apply for the housing benefits. Then, click on «Mes services en ligne / Faire une demande de prestation».

List of documents:

- Identity
 - You are European: ID card
 - You are not European: Passport + Visa + visa validation or residence card
- Birth certificate with names of your parents + certified translation*. Make sure to not crop off your birth certificate (and its translation) while scanning. Stamps must be fully legible.

*The translation is not needed for following countries : Austria, Belgium, Bulgaria, Croatia, Cyprus, Czech Rep, Denmark, Estonia, Finland, Germany, Greece, Hungary, Iceland, Ireland, Italia, Latvia, Liechtenstein, Lithuania, Luxembourg, Malta, Netherlands, Norway, Poland, Portugal, Romania, Slovakia, Slovenia, Spain, Sweden and UK

- Lease Agreement/Contract. For Crous accommodation: ask for the document “Aide au logement étudiant - Attestation de loyer Crous” at your CROUS residence, or download it from your personal account on “Mes services étudiants”.
- School certificate
- European students: European Health Insurance Card (EHIC)
- Bank account details (RIB/IBAN). Your bank must be in France or in the SEPA zone (EU/ EEA/Switzerland)

Please note that the housing allowance entitlement will become active the month after you move in. The CAF will NOT pay the allowance for the 1st month spent in the accommodation. Allowance usually arrives at the very end of the month.

BANK ACCOUNT

Once in Lyon, you can open a bank account. A French or European bank account is useful if you want to apply for housing allowance.

How to open a bank account in France?

It has been recommended by previous International students.

Make an appointment by phone or go directly to an agency and bring:

- Passport
- Visa
- Proof of residence
- ISARA enrolment certificate
- Scholarship certificate (if you have one)

Usually, opening a bank account for a relatively short period of time is free. However, prices depend on the agency.

Here are some examples of banks:

- Crédit Agricole
- BNP
- Crédit Mutuel
- Crédit Coopératif
- Banque Populaire
- Online banks like REVOLUT are also a good alternative with an English speaking customer service

Do not forget to close your bank account when you leave France after receiving the CROUS deposit.

Check beforehand with your bank (in your home country) if there is any partnership with French Banks.

If needed, bank agencies also offer housing insurance for students.

HEALTH AND INSURANCE

Non-European students:

Students must be enrolled in the French General Social Security scheme. All students will be able to register for free at the French Healthcare Scheme to benefit from the basic social healthcare. You must register on the Social security [website](#) (available in French, English and Spanish).

It is a free healthcare system that allows you to benefit from advantages concerning illness, accident, medication (usually free)... For example, if you go see a doctor, a consultation is about €25. With it, you will be refund €17 (by presenting your Social Security number to the doctor). Also, if you have a complementary insurance, the total sum could be refund.

European students or non-EU students living in Europe:

You are eligible to ask for the [European Health Insurance Card](#) (EHIC) at your national health care provider. Please bring the original card with the appropriate expiry date. Note that you will be covered for the same risks as in your home country, therefore you have to check that your insurance is covering the following items: medical costs and hospitalisation, civil liability, repatriation, work accidents.

Keep all your receipts to be reimbursed once back in your country.

Complementary insurance:

In all cases, if you have not already subscribed to a complementary insurance in your home country, **we strongly recommend you to subscribe to one** (for instance SMERRA, PartirAssur, Heyme).

The French social security [website](#) is a mine of information that can provide you with the names and addresses of all practitioners in any city in France.

MSA complementary insurance:

Every ISARA student, teacher and staff are covered by the MSA accident insurance. It covers injuries endured at school or at work (laboratory, field trip, practical work...). It is a mandatory complementary insurance. **€150 will be required from the ISARA accountancy department.** You will receive an invoice upon your arrival.

DAILY LIFE



Mobile phone:

There are several phone operators in France, offering a wide range of plans. We suggest you ask for a plan “sans engagement” (without obligation) Getting a mobile phone deal through a mobile virtual network operator is usually more affordable (for example Free, B&YOU, Red, Sosh, NRJ Mobile, La Poste mobile...).

To get a mobile phone plan, you MUST open a bank account beforehand and provide a French address. Do not forget to close your mobile phone plan.



Shops:

During weekdays, supermarkets and shops are open from 08:30 to 19:30. Most of the shops are closed on Sundays in France. However, some supermarkets are open until midday and most of the restaurants in the city centre are open.



Voltage:

Voltage is 220 V 50 Hz in France. Electrical outlets are European type. We recommend you to check prior to departure whether you need a power plug adapter / voltage converter or not.



Climate:

France has a mostly temperate climate but also includes many regional differences. Average winter temperatures range from 0°C to 7°C (32°F to 46°F) and average summer temperatures from 16°C to 35°C (61°F to 90°F). Winters are a lot colder in Lyon area due to the proximity with mountains. During summertime, you can have very warm days (38°C = 100°F) but also some chilly days (14°C=57°F).

Facilities are rarely air-conditioned and with mosquito screens on windows.



Mental health:

You are in need of support or answers? You are feeling stressed, anxious, depressed or lonely? You are struggling with your studies or having family problems?

- **Meet a psychologist for free** at PEPS (Point Ecoute Psychologique du Supérieur):
Call 06 27 86 91 83 or by email to apsytude@gmail.com
- **Call SOS Help:** 01 46 21 46 46
- **Find English-speaking counsellors and therapists** in France :
www.counsellinginfrance.com or www.talking-online.com

PUBLIC TRANSPORTATION

The TCL network offers a wide range of services as it includes 4 “metro” lines, 6 tramway lines, 2 funicular lines and over 130 bus lines.

You can easily go from one place to another in the city using different lines. However, do not forget to validate your ticket each time you change lines.

Ticket prices:

- **Single ticket** (1h from validation) - €2.10
- **Ticket 24H** (unlimited travel on the TCL network for 24 hours) - €6.70
- **Ticket «soirée»** (unlimited travel on the TCL network from 7pm to the end of the service) - €3.60
- **Student book of 10 tickets** - €17
- **TCL student card** “abonnement 18-25ans” or “abonnement étudiant 26-27ans” (unlimited travel on the TCL network) - €25/month

How to create your TCL student card:

- Go to a TCL Agency (Bellecour, Gorge de Loup, Part-Dieu, Grange Blanche, Vaulx en Velin-La Soie)
- Each month, you can top up online or in a TCL agency or vending machine in the metro’s and tramway’s stations using your credit card

You can [book an appointment](#) with a TCL sales office on the website to create your card and avoid the wait.

Download the [Citymapper app](#) to find your way around

Download the [TCL’s interactive map](#) (tram, subway)

Documents to bring:

- ID card or your passport
- ISARA enrolment certificate
- Housing certificate (ask for one at your student residence or ask for an Attestation de domicile)
- A €5 fee applies at the creation of your TCL card

Other means of transportation in Lyon:

- [Vélo’v](#) bike service that is simple and practical for short journeys in Lyon
 - Single ride: €1.80 + rental period (first ½ hour is free)
 - Day pass: €4 (valid for 24 hours)
 - 14-25ans Annual Membership: €16.50 for the whole year
- [Trottinettes électriques Lime S](#): open-access Electric Scooters (App)

BUDGET

The following is the expected average monthly budget for students under 28 years old staying at a Public Crous Residence for 2022 2023:

Rental costs in a CROUS student room:

- €283 to €420/month
- + 1 month deposit: €250 (reimbursed at the end of your stay)
- + Entrance fee: €200 or €300 (to be paid once and not refundable)
- + File processing costs: €10 (to be paid once)
- + Sheets: €10/month (optional)
- + Housing insurance: €40/year

Food:

About €200/month

Transport:

- €25/month (for student under 28 years old)
- + €5 for the card (paid once)

Leisure and other personal costs:

€150 (according to your habits)

Health and complementary insurance:

- Insurance: €60
- CVEC: €103 (student fee to be paid once)
- MSA accident insurance: €150

Contribution to field trips for exchange and guest students:

A maximum of €250 for the whole semester (Field trip Agroecology Students)

Total/Month:

1st Month : about €1933 - Then about €850

The total is based on the maximum budget; it can differ according to your habits.

SYSTEM OF ECTS GRADES

ECTS Grade	% of successful students achieving the grade	Grading system
A	16 to 20	Excellent - Outstanding performance with only minor errors
B	14 to 15.9	Very good - Above the average standard but with some errors
C	12 to 13.9	Good - Generally sound work with a number of notable errors
D	11 to 11.9	Satisfactory - Fair but with significant shortcomings
E	10 to 10.9	Sufficient - Performance meets the minimum criteria
FX	8 to 9.9	Fail - Some more work required before the credit can be awarded
F	< 8	Fail - Considerable further work is required

USEFUL WEBSITES

Information for students coming to Lyon:

[ISARA](#) - [Campus France](#)

[Only Lyon](#) - [Lyon Campus](#) - [Lyon Expat](#)

[Centre d'information et de documentation jeunesse](#) - [CVEC](#)

[ESN CosmoLyon](#) : Events with international students from all over the city (dinners, activities, visits...). At the start of each semester, there is "La bourse aux Objets" that allows you to collect any items you might need, free of charge.

Health care:

[Ameli](#)

[PartirAssur](#) - [SMERRA](#) (pack in France)

[Le Ralliement](#) - [Heyme](#)

Transportation:

[TCL](#): local public transportation company - [Vélo'v](#): bicycle rental service

[SNCF](#): national train company. If you are planning to explore France by train, you may take a "Carte Jeune" which gives you interesting discounts.

Personal favourites - Local & super useful:

[Le Bon Coin](#): you can rent a flat, buy/sell any kind of good (second hand products).

[Le Petit Paumé](#): free guide edited by students with good deals and places to go.

Leisure:

[Lyon France](#) - [Lyon City Crunch](#) - [Le Bonbon Lyon](#)

[Lyon International association](#): proposes outings and dinners in a French family

[Traboules de Lyon](#): Lyon's secret and hidden paths through the history of the city

Student Jobs (non-exhaustive list):

[Info Jeunes Auvergne-Rhône-Alpes](#)

[Offres d'emplois pour étudiants](#) - [Studyrama](#) - [Cap Campus](#) - [Student Job](#) - [Momji](#)

French language learning (FLE):

[Alliance Française](#) - [ILCF](#) - [KoToPo](#) - [Coup de Pouce Université](#)

ENJOY YOUR TIME IN LYON!

ISARA

23 rue Jean Baldassini
69364 LYON CEDEX 07 - FRANCE
Tel : 00.33.(0)4.27.85.85.89
www.isara.fr

Watch our international student testimonies!

